

Site	Distance from Fermilab (km)	Depth (mwe)	Rock type	Access	Condition	Refs
Soudan Mine, MN	735	2,200	Hard rock	Vertical	Operating Laboratory	[1]
SNOLAB, ONT	770	5,890	Hard rock	Vertical	Commercial mine; Operating Laboratory	[2]
Kimballton Mine, VA	820	1,900	Limestone	Horizontal	Commercial mine; Operating Laboratory	[3]
Sanford Underground Research Facility, SD	1,290	4,200-6,000	Hard rock	Vertical	Operating Laboratory	[4]
Henderson Mine, Co.	1,495	3,100-6,000	Hard rock	Vertical	Commercial mine	[4]
WIPP, Carlsbad, NM	1,725	1,800	Salt bed	Vertical	DOE Waste Facility; Operating Laboratory	[6]
Yucca Mountain, NV	2,460	~800	Volcanic Tuff	Horizontal	Closed, partially built DOE waste facility	[7]
San Jacinto, CA	2,620	4,000-6,000	Hard rock	Horizontal	Undeveloped site	[8]
Cascades - Pioneer Tunnel, WA	2,630	2,100	Hard rock	Horizontal	Utility tunnel parallel to active railroad tunnel	[9]

[1] <http://www.sudan.umn.edu/>

[2] <https://www.snolab.ca/>

[3] <http://cnp.phys.vt.edu/cnp-bin/features.pl?story=001>

[4] <http://www.sanfordlab.org/>

[5] Henderson DUSEL, NSF DUSEL Solicitation 3 Proposal, 9 Jan 2007, [http://lbne2-docdb.fnal.gov/cgi-bin/RetrieveFile?docid=499;filename=HendersonDUSEL\\_S3\\_proposal\\_submitted.pdf;version=1](http://lbne2-docdb.fnal.gov/cgi-bin/RetrieveFile?docid=499;filename=HendersonDUSEL_S3_proposal_submitted.pdf;version=1)

[6] [http://www.wipp.energy.gov/science/UG\\_Lab/UG\\_LabNew.html](http://www.wipp.energy.gov/science/UG_Lab/UG_LabNew.html)

[7] [http://en.wikipedia.org/wiki/Yucca\\_Mountain\\_nuclear\\_waste\\_repository](http://en.wikipedia.org/wiki/Yucca_Mountain_nuclear_waste_repository)

Yucca Mountain: Information on Alternative Uses of the Site and Related Challenges, GAO-11-847, September 2011, <http://www.gao.gov/new.items/d11847.pdf>

Archived web pages from DOE Office of Civilian Radioactive Waste Management,

[http://web.archive.org/web/20080327111954/http://www.ocrwm.doe.gov/ym\\_repository/index.shtml](http://web.archive.org/web/20080327111954/http://www.ocrwm.doe.gov/ym_repository/index.shtml)

References cited by the U.S DOR for Yucca Mountain License Application,

<http://www.nrc.gov/waste/hlw-disposal/yucca-lic-app/references.html>

Yucca Mountain Site Description, Vol. 1, April 2004,

<http://pbadupws.nrc.gov/docs/ML0906/ML090690389.pdf>

Yucca Mountain Site Description, Vol. 1, April 2004,

<http://pbadupws.nrc.gov/docs/ML0906/ML090690390.pdf>

Underground Layout Configuration, September 2003,

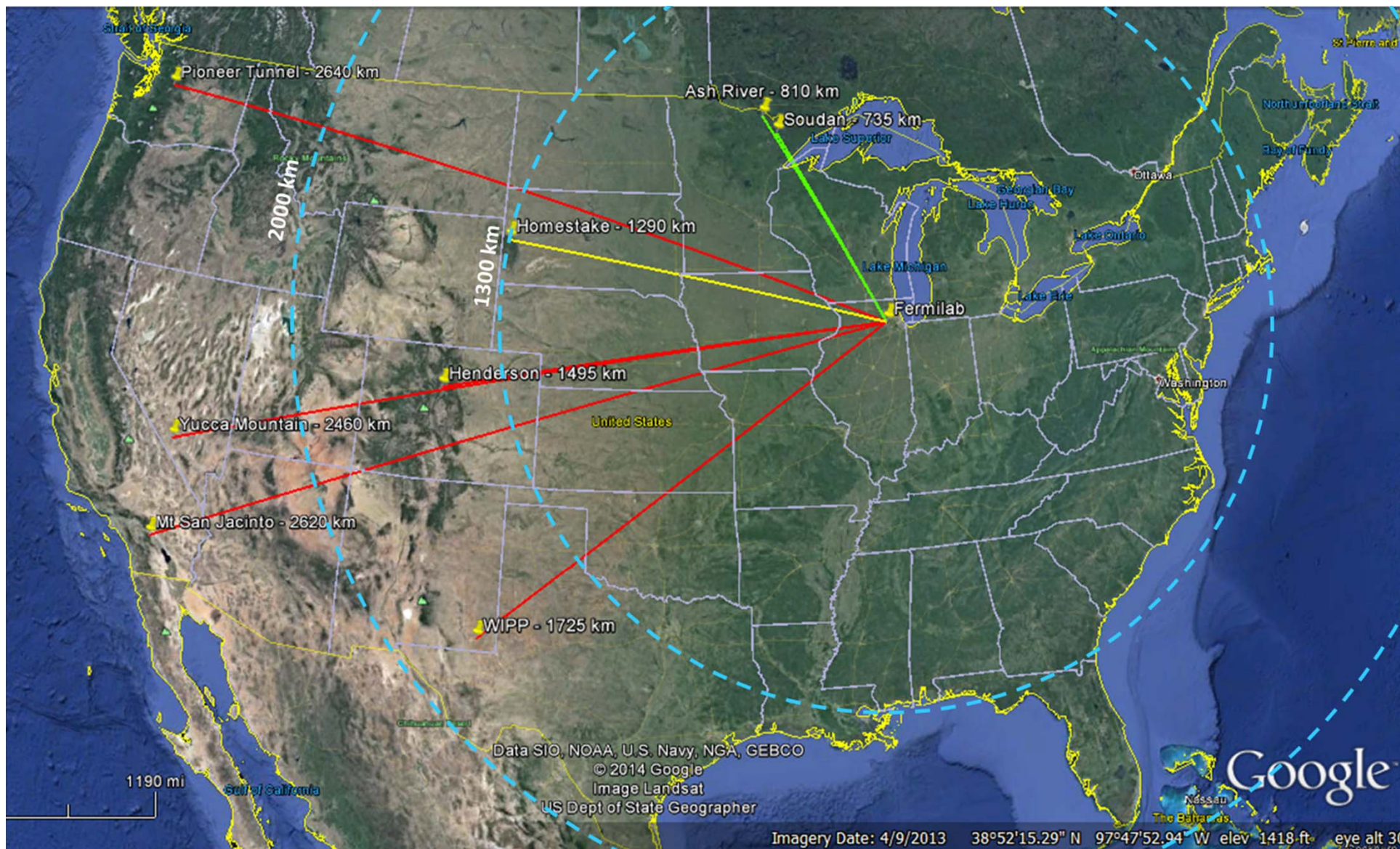
<http://pbadupws.nrc.gov/docs/ML0906/ML090690344.pdf>

[8] <http://bill.ps.uci.edu/~SJNUSL/solicitation2/solicitation2.html>

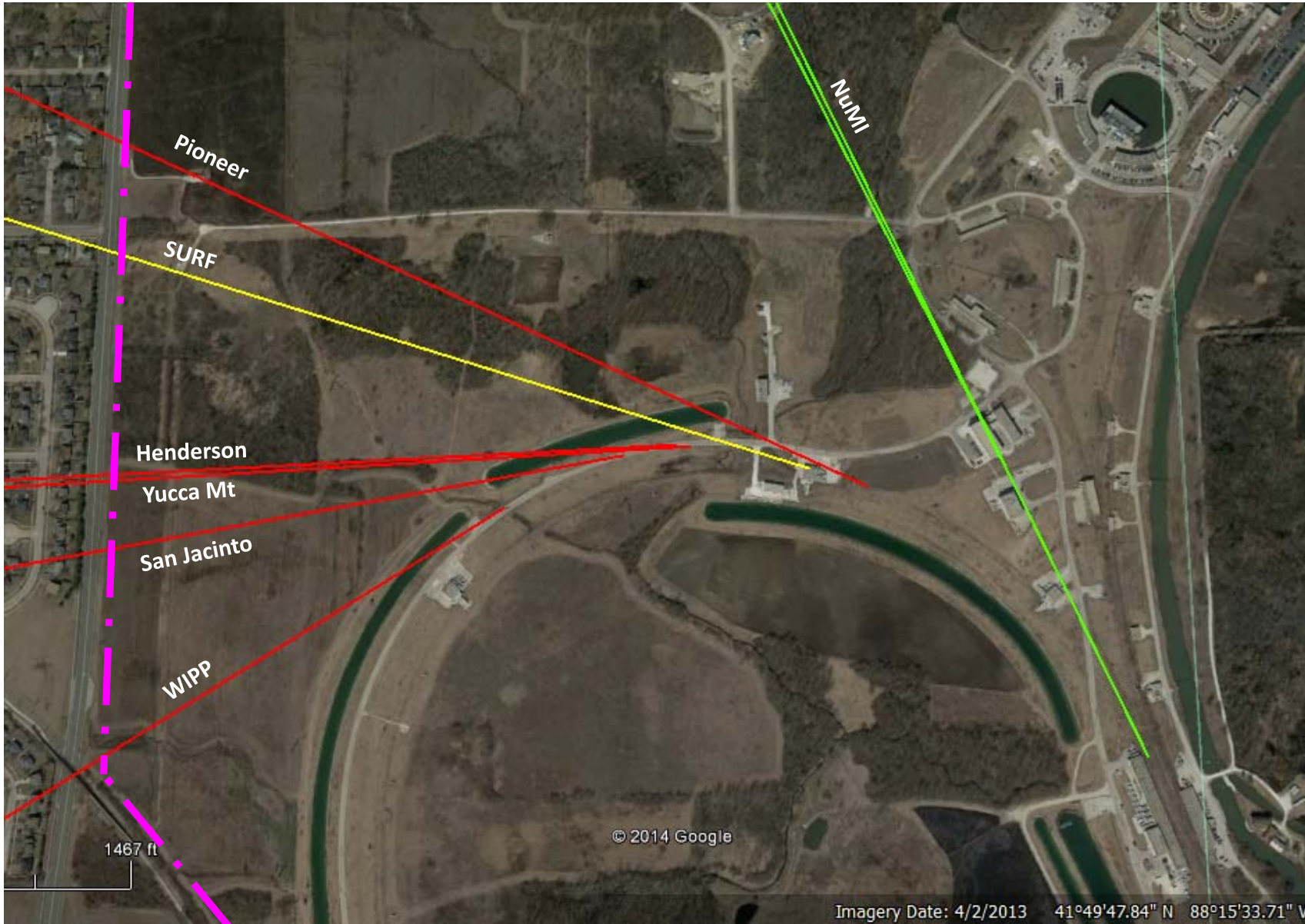
[9] [9] DUSEL-Cascades S3 Proposal page, <http://www.int.washington.edu/s3/index.html>

S3 CONCEPTUAL DESIGN PROPOSAL: THE DEEP UNDERGROUND SCIENCE AND ENGINEERING LABORATORY – CASCADES, January 2007, <http://www.int.washington.edu/s3/proposal.pdf>

W.C. Haxton et al., NIM A, Volume 570, Issue 3, 21 January 2007, pp. 414-436, arXiv:nucl-ex/0604004.







Cascades Site

